

# RESEARCH POSTGRADUATE STUDIES

**@HKU SCIENCE**

Pursuing research eminence  
at Asia's World City

2025-26



# Internationalisation and Diversity

A global network where  
**intellectual minds meet**

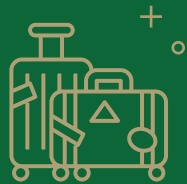
#**6** THE most international  
university in the world (2024)



**60%**  
of academic staff members  
are from overseas



**>650**  
research students  
from over 28 countries



## QS World University Rankings

#**2** in Asia (2024) | #**17** in the world (2025) | #**10** World graduate employability (2022)

## THE World University Rankings

#**6** in Asia (2024) | #**35** in the world (2024) | #**43** in Life Sciences (2024)  
#**47** in Physical Sciences (2024)

**Research Assessment  
Exercise (RAE) 2020  
by the University  
Grants Committee  
(UGC) affirmed**

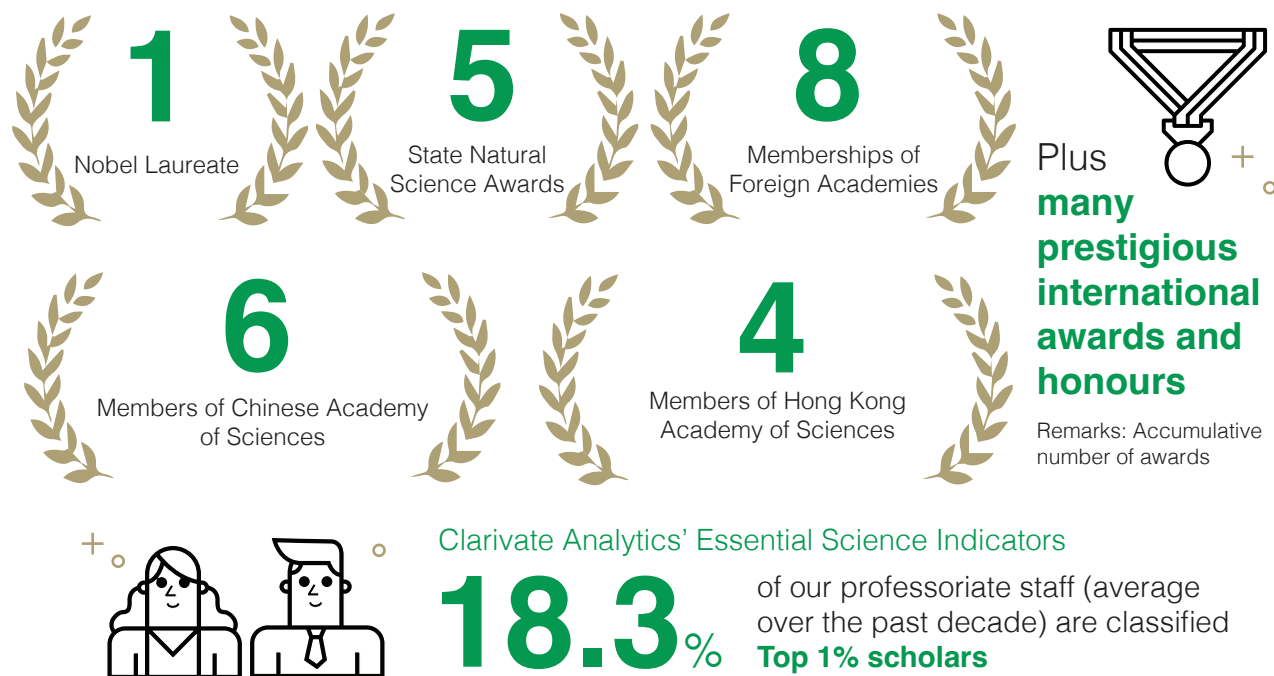
**HKU Science’s  
world-leading  
research position**

HKU Science’s performance in the latest Research Assessment Exercise (RAE) 2020 by the University Grants Committee (UGC) was very encouraging. Among the five Units of Assessment (UoA) to which HKU Science submitted, under the Panels of Physical Sciences and Biology, we outperformed other local universities and achieved the highest percentage of 4\* ratings in three UoAs including Chemistry, Earth Sciences and other Physical Sciences, and Mathematics and Statistics, affirming our world-leading position in the aforementioned fields. Overall, 83% of the research submissions by HKU Science’s 118 eligible staff was rated as world-leading (4\*) or internationally excellent (3\*).

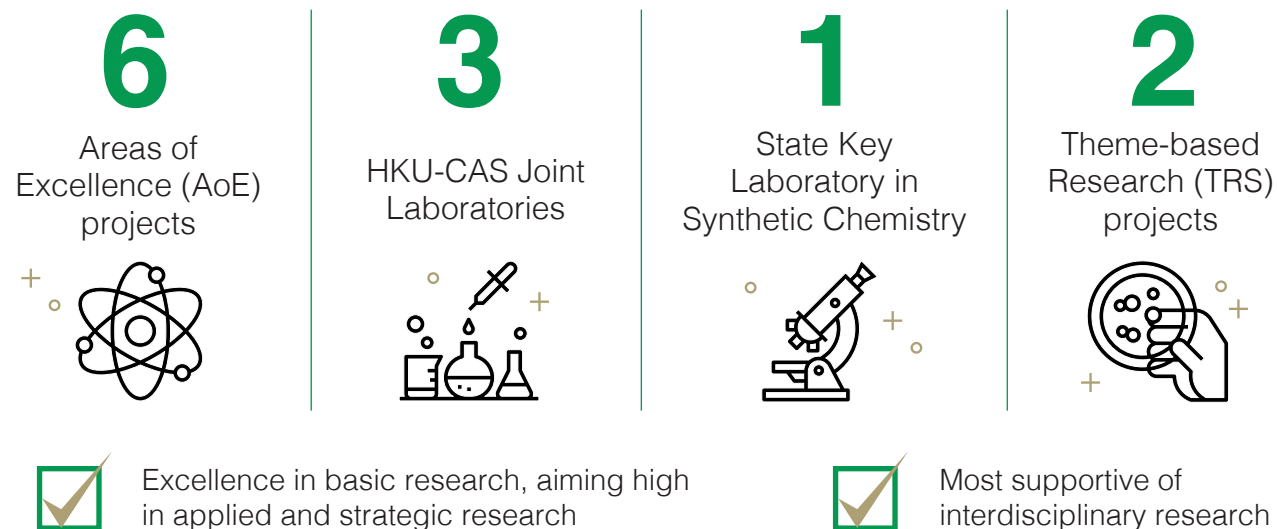
Unit of Assessment (UoA)	HKU Science	Sector-wide average
Chemistry	<b>99%</b> (Highest in 4* in the UoA)	92%
Physics & Astronomy	<b>95%</b>	91%
Earth Sciences & Other Physical Sciences	<b>85%</b> (Highest in 4* in the UoA)	77%
Mathematics & Statistics	<b>82%</b> (Highest in 4* in the UoA)	77%
Biological Sciences	<b>62%</b>	61%

- Percentage judged to be “world-leading” (4\*) and “internationally excellent” (3\*).
- The exercise is held once every six years.

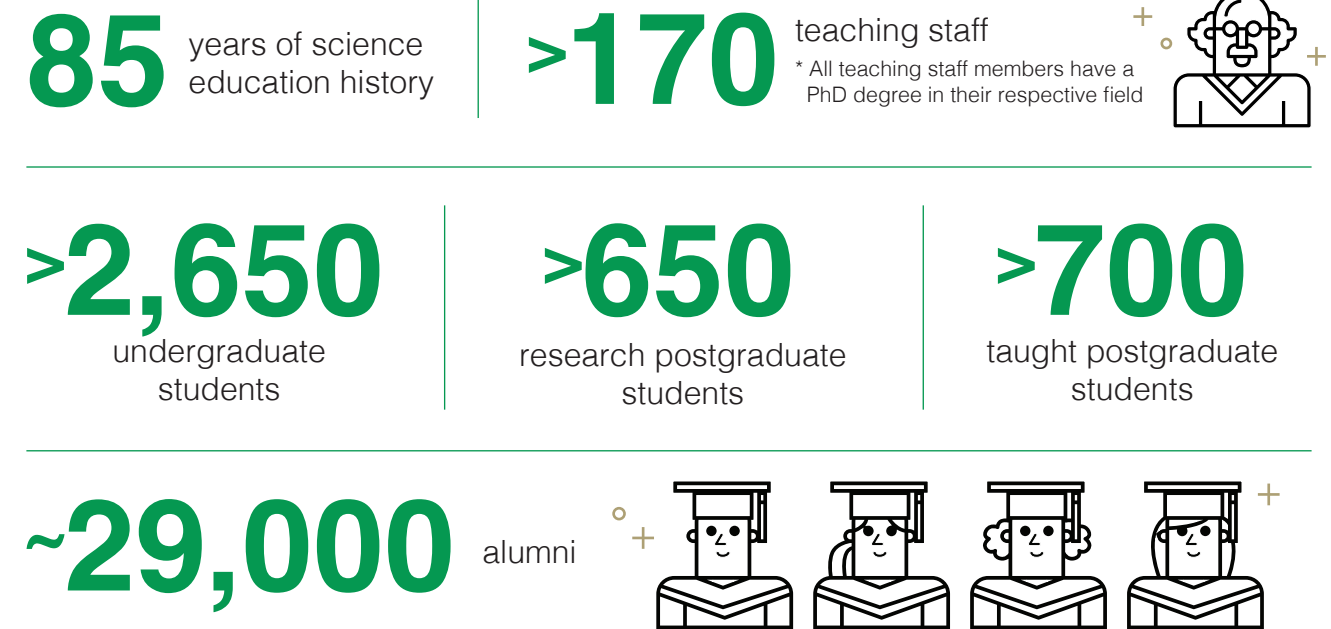
## Top-notch Scholars



## Research Eminence



## Well-established Faculty



Extensive Collaborations with World-class Universities



Cutting-edge Research Facilities

## Robust Funding

Projected funding of **HK\$807 million** for the following InnoHK projects:

### Health@InnoHK programme

#### The Laboratory for Synthetic Chemistry and Chemical Biology

aims to produce innovative, high-impact and leading-edge interdisciplinary research in the area of drug discovery and development

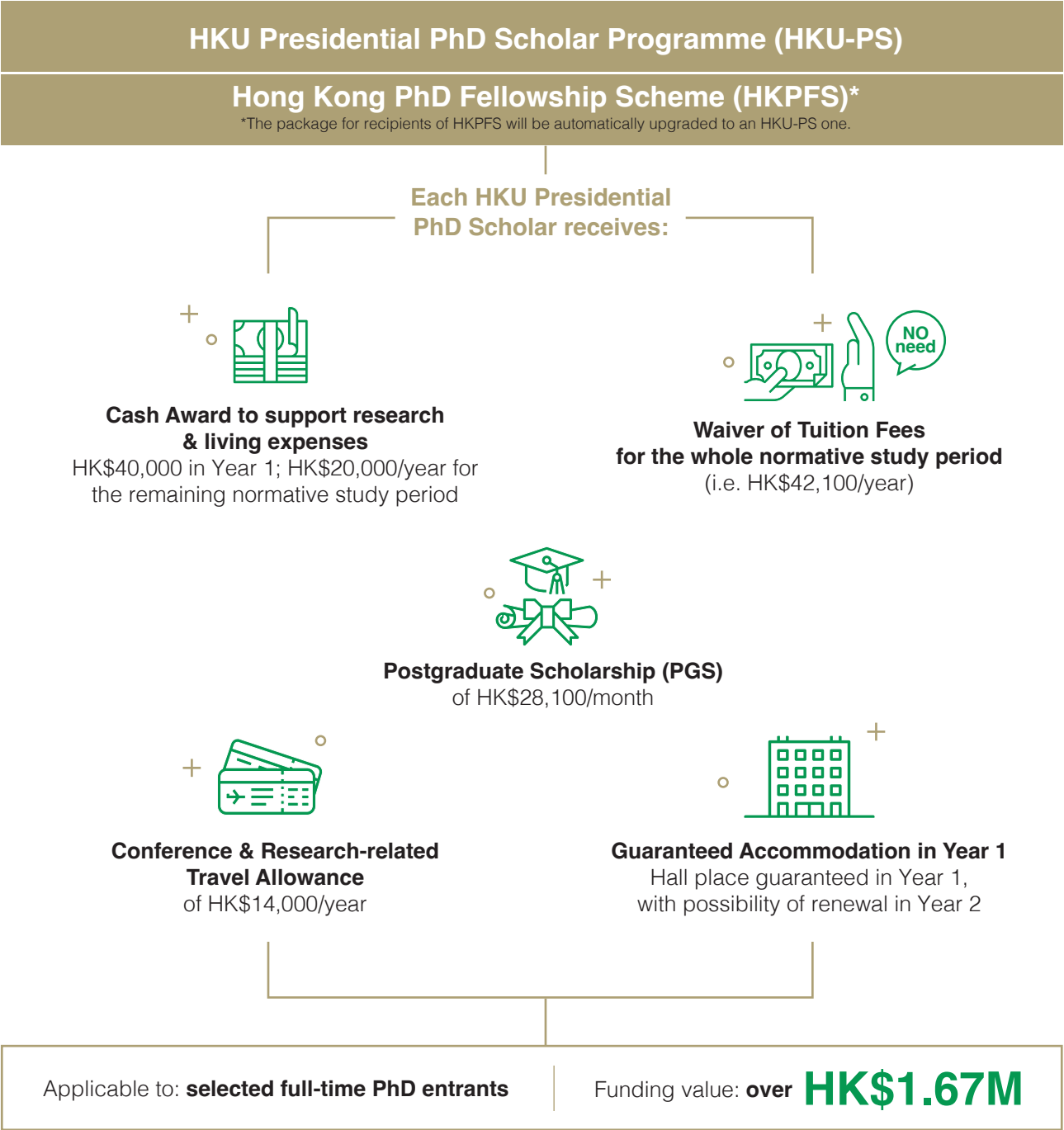
### AIR@InnoHK programme

#### The Hong Kong Quantum AI Lab

multi-disciplinary programme which combines big data/machine learning, computational science and experiments to discover new energy materials and devices

# Stipend and Support for the Most Talented Research Elites

A generous package for recipients of:





## 6 Science Departments/Schools



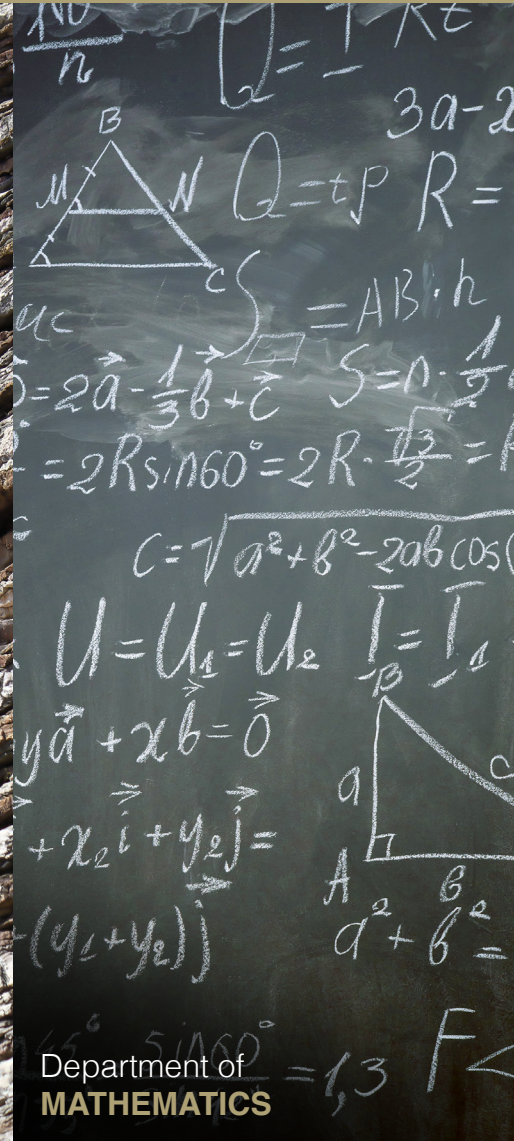
School of  
**BIOLOGICAL SCIENCES**



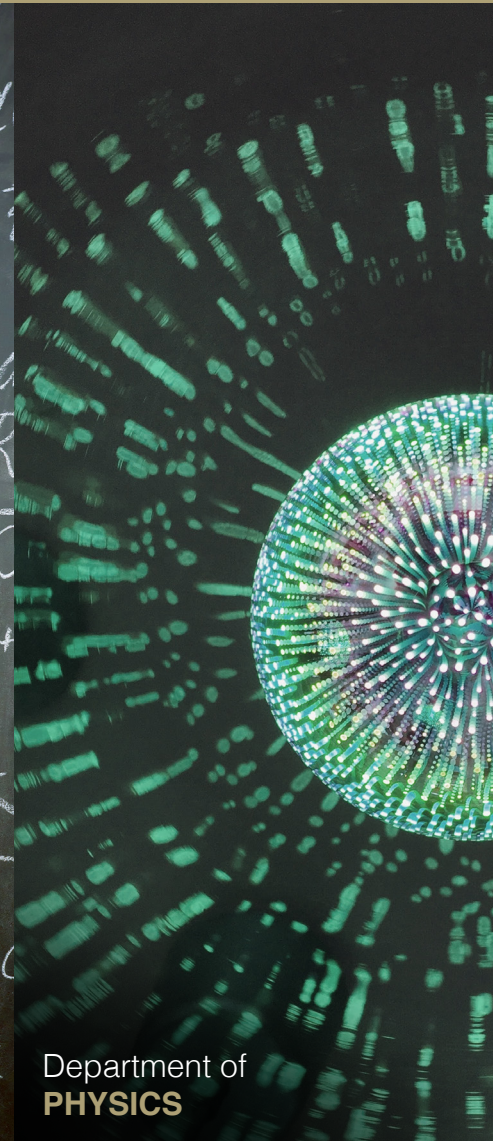
Department of  
**CHEMISTRY**



Department of  
**EARTH SCIENCES**



Department of  
**MATHEMATICS**



Department of  
**PHYSICS**



School of **COMPUTING & DATA SCIENCE**

A new School under both the Faculty of Science and Faculty of Engineering that encompasses the Department of Statistics & Actuarial Science and the Department of Computer Science

## 3 Interdisciplinary Research Units



Institute of Mathematical  
Research (IMR)



Laboratory for  
Space Research (LSR)



The Swire Institute of  
Marine Science (SWIMS)



# Programmes@HKU

## Master of Philosophy (MPhil)

Degree	Study period	
MPhil	Full-time	2 years

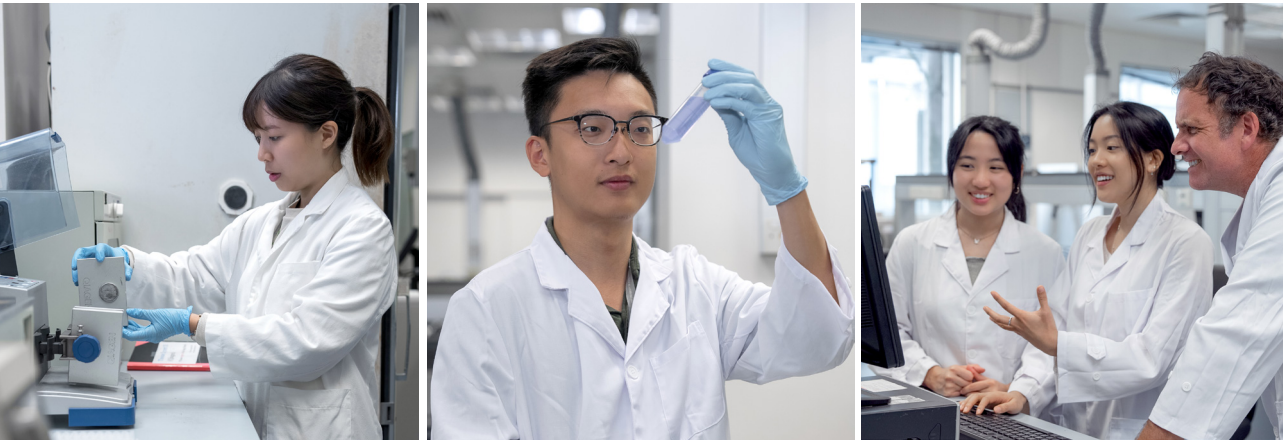
Candidates for MPhil degree will be required to follow an approved course of study and research, including coursework on discipline-specific knowledge, language and research skills. The coursework component is well designed to equip students for their research work and thesis writing.

## Doctor of Philosophy (PhD)

Degree	Study period	
3-year PhD*	Full-time	3 years
4-year PhD#	Full-time	4 years

\* Those who already hold a research Master's degree (e.g. MPhil) will only be considered for admission to a 3-year PhD programme.  
# Applicants who have a good Bachelor's degree with honours and/or a taught Master's degree will be considered for admission to a 4-year PhD programme.

Candidates for 4-year PhD programme will be required to follow an approved course of study and research, including coursework on discipline-specific knowledge, language and research skills. The coursework component is well designed to equip students for their research work and thesis writing. Candidates for 3-year PhD programme may also be required to take courses and satisfy coursework requirements.



# Joint PhD Programme

## King’s College London



### Programme features

- Students admitted to the joint PhD programme will:
- be registered as full-time students at both universities and be able to enjoy their full range of academic and various facilities;
  - be guided in their work by faculty members from both universities, and be examined to the standards of both;
  - normally split their time of study equally between the two universities and spend the last six months of study in the home university; and
  - be conferred a PhD degree jointly awarded by HKU & KCL.

# Joint Educational Placement for PhD

In order to foster stronger collaboration with international institutions and allow PhD students to learn and work with renowned international scholars, the Faculty of Science has offered Joint Educational Placement programmes for our PhD students with the following institutions:

1. University of Toronto
2. Sapienza Università di Roma and McMaster University



### Programme features

- Students admitted under the joint educational placement programme will:
- have to choose a home/lead institution and a host institution and have to meet the admissions requirements of both institutions;
  - have to pay tuition fees to the home/lead institution only and are entitled to apply for scholarships at the home/lead institution;
  - be co-supervised by faculty members from both institutions, and be examined to the standards of both;
  - have the same access to facilities at both institutions;
  - spend 6 – 24 months at the host institution upon mutual agreement of the two supervisors; and
  - be conferred a degree awarded by the home/lead institution.

# Hear from Our PhD Students

## 04 Pauline DUFOUR

School of Biological Sciences

Recipient of HKPFS and HKU-PS

**Field of study:**

wildlife conservation, focusing on conservation physiology

**Place of origin:** France

**Supervisor:** Professor Timothy BONEBRAKE

My supervisor, Professor Timothy BONEBRAKE, has granted me his trust from the start and allowed me to develop my ideas at my own pace. I am very grateful for the opportunities and advice I received from him over the years.

This programme has also provided me with opportunities to join various international conferences, allowing me to meet people beyond papers including renowned researchers in my field. The whole experience was rewarding.

## 01 Qin Han TEO

Department of Chemistry

Recipient of HKPFS and HKU-PS

**Field of study:**

synthetic organic chemistry, focusing on making molecules with seven-membered rings

**Place of origin:** Malaysia

**Supervisor:** Professor Pauline CHIU

This programme has trained me to thrive in challenging environments. I value and enjoy the process of adapting to the unknown. With time, this will improve my self-resilience and help me develop as a whole person.

I am grateful for the annual cash award and research funding that were awarded to me to support my research and cover some of my living expenses.

## 05 Huaqing JIN

Department of Statistics and Actuarial Science

Recipient of HKPFS and HKU-PS

**Field of study:**

biostatistics, focusing on analysing of the medical data and clinical trials

**Place of origin:** Mainland China

**Supervisor:** Professor Guosheng YIN

My supervisor Professor Guosheng Yin has given me valuable advice on developing my career.

The travelling allowances also enabled me to attend more overseas conferences, and even amidst this pandemic situation, I could still make it online and exchange ideas with intellectual researchers around the globe.

## 02 Anyang DING

Department of Earth Sciences

Recipient of HKPFS and HKU-PS

**Field of study:** biogeochemical cycling, focusing on iron cycling in Precambrian oceans and its interaction with the environment

**Place of origin:** Mainland China

**Supervisors:** Professor Guochun ZHAO, Dr Sean CROWE and Professor Yiliang LI

I am grateful to have the guidance from my supervisor, Professor Yiliang LI, over the years. He is always there to listen, help, and offer guidance. We have had numerous inspiring conversations – it is he who gave me the confidence to explore any topics that interested me.

Additionally, HKPFS allowed me to be free from financial restrictions and choose any topics I desire to focus on.

## 06 Aneesh JATAR

Department of Mathematics

Recipient of HKU-PS

**Field of study:**

complex analysis

**Place of origin:** Hong Kong

**Supervisor:** Professor Tuen Wai NG

The experience of working with my research group has been very rewarding and encouraging. My supervisor Professor Tuen Wai NG has provided me with ample support both personally and professionally, and the questions being prompted by him and my group during presentations and discussion are invaluable to me, as they serve to point out errors in my thinking, as well as deepen my understanding of my studies.

I am excited at the prospect of continuing to conduct research in mathematics.

## 03 Elsie Chit Yu IU

School of Biological Sciences

Recipient of HKU-PS

**Field of study:**

metabolism, focusing on the metabolic adaptation of the skeletal muscle

**Place of origin:** Hong Kong

**Supervisor:** Professor Chi Bun CHAN

The scholar programme has transformed my life. My supervisor Professor Chi Bun CHAN always initiates thought-provoking conversations that stimulate me to seek answers on my own rather than spoon-feed me information. He always offers comfort and guidance to help me overcome adversity.

I appreciate the financial support and opportunities to participate in the international conferences, which allowed me to exchange ideas with researchers from other countries.

## 07 Jinn Ming YAP

Department of Physics

Recipient of HKPFS and HKU-PS

**Field of study:**

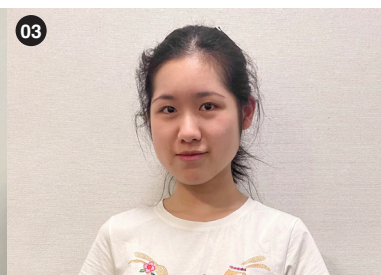
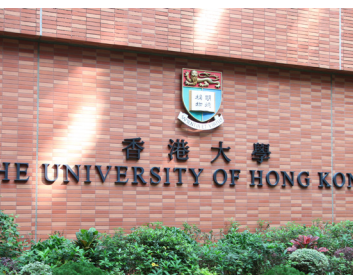
nuclear physics, focusing on nuclear isotopes that are important in stellar processes

**Place of origin:** Malaysia

**Supervisor:** Professor Jenny LEE

The programme has broadened my network to other scientific areas and enriched my student life. With the strong ties of my supervisor Professor Jenny LEE in the international nuclear physics community, I am given the opportunity to collaborate with researchers worldwide. She has also motivated me to follow in her footsteps to produce the best possible research work to my capabilities.

Additionally, HKPFS enabled my overseas research by removing a huge financial burden.



# Admissions

## General admissions requirements

The basic qualification necessary for admission to research postgraduate studies:

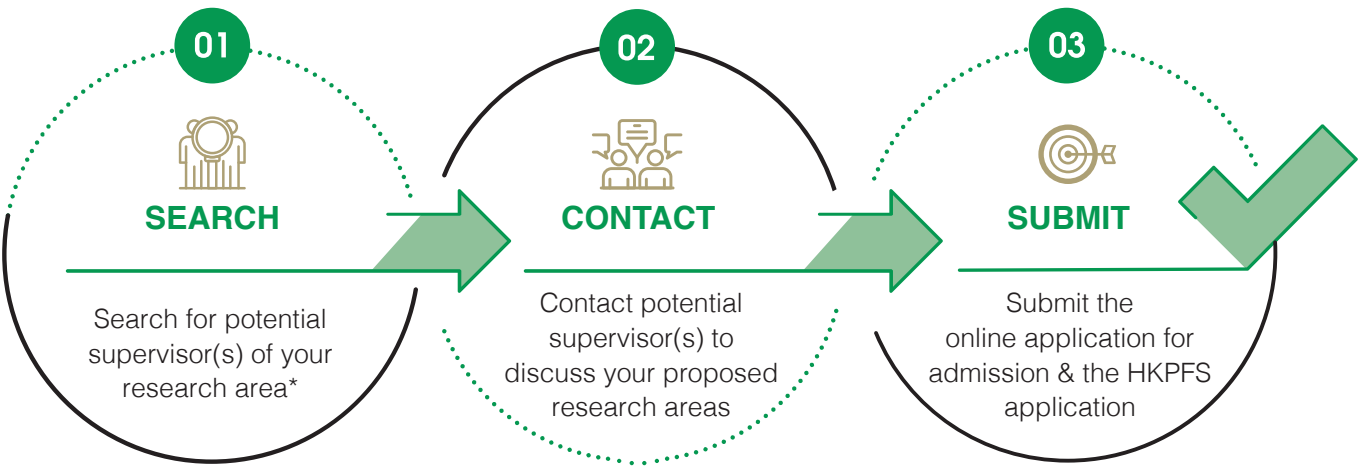
- **MPhil:**
  - a Bachelor's degree with honours (or equivalent qualification) from a recognised university.
- **PhD:**
  - a Bachelor's degree with honours and a Master's degree (or equivalent qualification) from a recognised university; or
  - a Bachelor's degree with first class honours (or equivalent qualification) from a recognised university.
- applicants with qualifications other than an honours degree are considered on their individual merits.
- applicants who apply with a qualification from a university or a comparable institution whose teaching medium is not English are required to fulfill additional language requirements.

## Tuition fees

Study mode	Tuition fees (per annum)
Full-time (non-local)	HK\$42,100*

\*subject to revision

## How to apply?



\*For details of major research areas, contact persons and postgraduate admissions advisors in each department/school, please visit: <https://bit.ly/3d6uixi>



# Important Dates for Application

SEP

## Hong Kong PhD Fellowship Scheme (HKPFS)

Initial Application to RGC & Full Application to HKU

## HKU Presidential PhD Scholar Programme (HKU-PS)

Candidates who are nominated for HKPFS will be considered for HKU-PS. Separate application for HKU-PS is not required.

DEC

## Main Round

Application deadline for MPhil & PhD

## 1<sup>st</sup> Clearing Round

Application deadline for MPhil & PhD

APR

## 2<sup>nd</sup> Clearing Round

Application deadline for MPhil & PhD

AUG

For more information, please visit:

**Online application**  
[rb.gy/qtrzwi](https://rb.gy/qtrzwi)



**Programme website**  
[bit.ly/3bDQktU](https://bit.ly/3bDQktU)



**Graduate School website**  
[bit.ly/3dtR82F](https://bit.ly/3dtR82F)



**FAQ**  
[bit.ly/2RjwVUy](https://bit.ly/2RjwVUy)





## Hong Kong


Located on the south-eastern tip of China's coast, Hong Kong is a unique place where East meets West and old meets new. As Asia's World City and a long established international business and finance hub, it draws talents from all corners of the globe, and offers the world's best and brightest students an ideal place to study, live and work. Come experience the vibrancy of exceptional culture, and immerse yourself in a city that never stops.

## HKU

The University of Hong Kong, Asia's Global University, delivers impact through internationalisation, innovation and interdisciplinarity. It attracts and nurtures global scholars through excellence in research, teaching and learning, and knowledge exchange. It makes a positive social contribution through global presence, regional significance and engagement with the rest of China.

### Faculty of Science


 <https://www.scifac.hku.hk/>


 (852) 3917 2683

 [scirpg@hku.hk](mailto:scirpg@hku.hk)

### Follow us on

 [science.hku](https://www.facebook.com/science.hku)

 [hku\\_science](https://twitter.com/hku_science)

 [hku\\_science](https://www.instagram.com/hku_science)

 [hkufacultyofscience](https://www.youtube.com/hkufacultyofscience)

 [hkuscience](https://www.wechat.com/qrcode?scene=scan_qrcode)

